



Technical specifications gas sampling hose.

With this **gas sampling hose** you get the best and accurate results Test on a GC shows a low adsorption on benzene. Other gas types have similar results. Low adsorption, high accuracy. The hose is covered in wheat to make sure it's easy to detangle

General specifications.

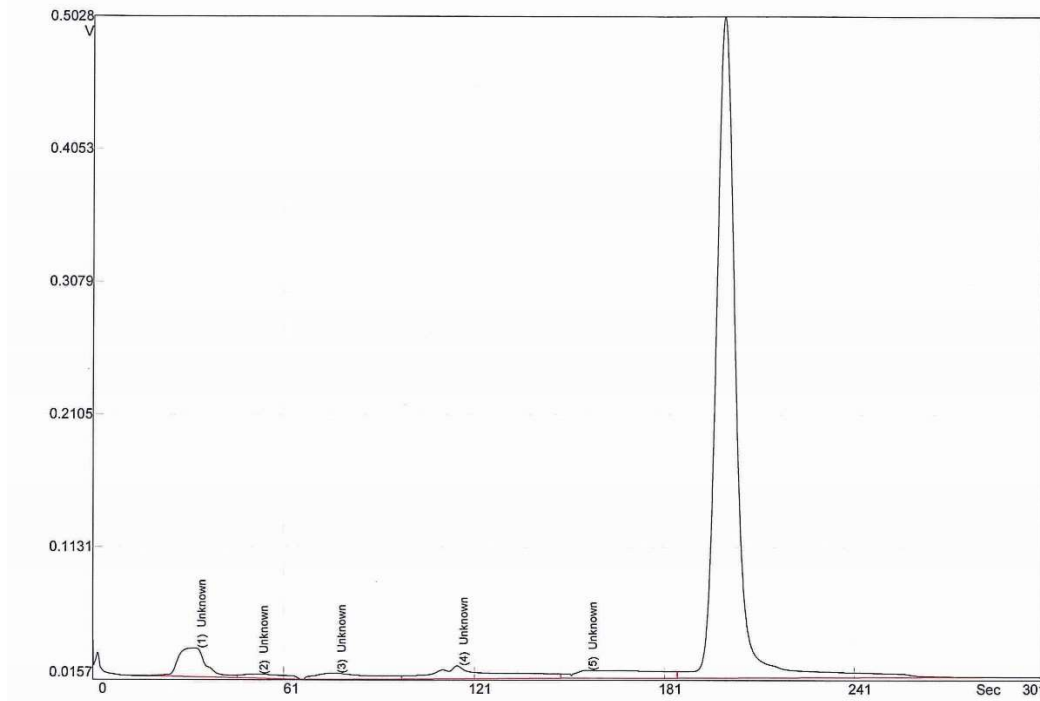
Dimensions	mm	3x5mm Artnr. 411 0018 038 5x8mm Artnr. 411 0018 039
Hardness	shore A	60 - 65
Density	g/cm ³	2,01 ± 0,03
Tensile strength	N/mm ²	8
Elongation at break	%	280
Resilience	%	8
shape retention at 24 h /175°C	%	20
Temperature resistant	°C	-18°C to +200°C
Short time heat exposure	°C	+250°C
In compliance with		IEC/TS 60079-32 1:2015



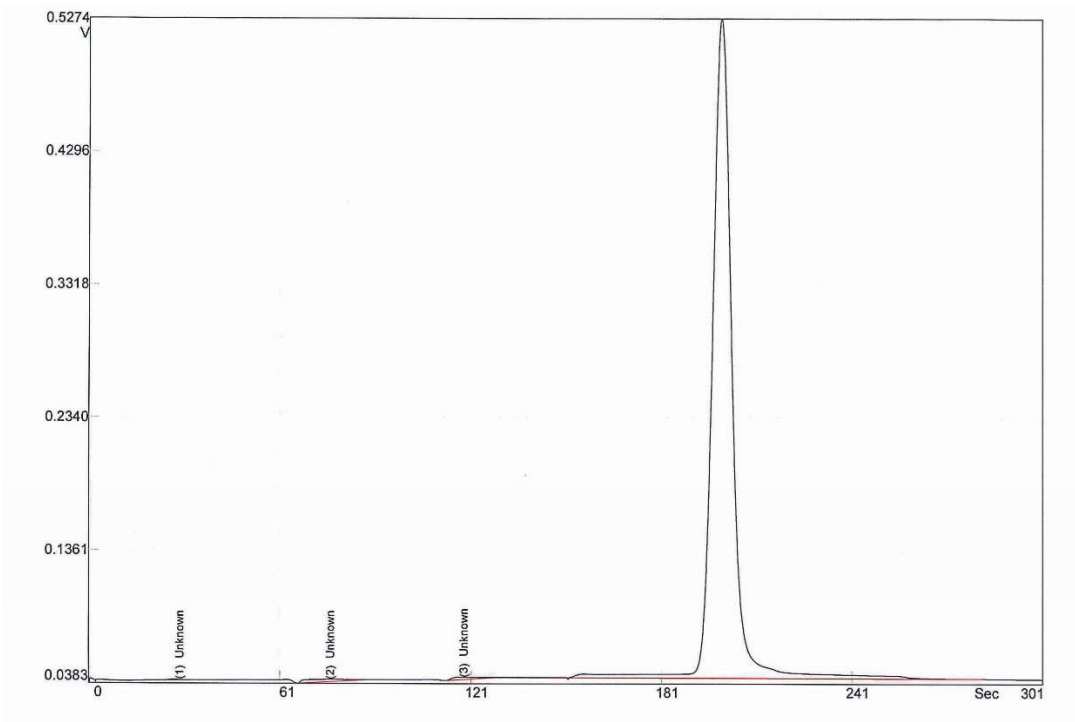


Test benzene adsorption different hose materials.

Test 1 general calibration without hose.



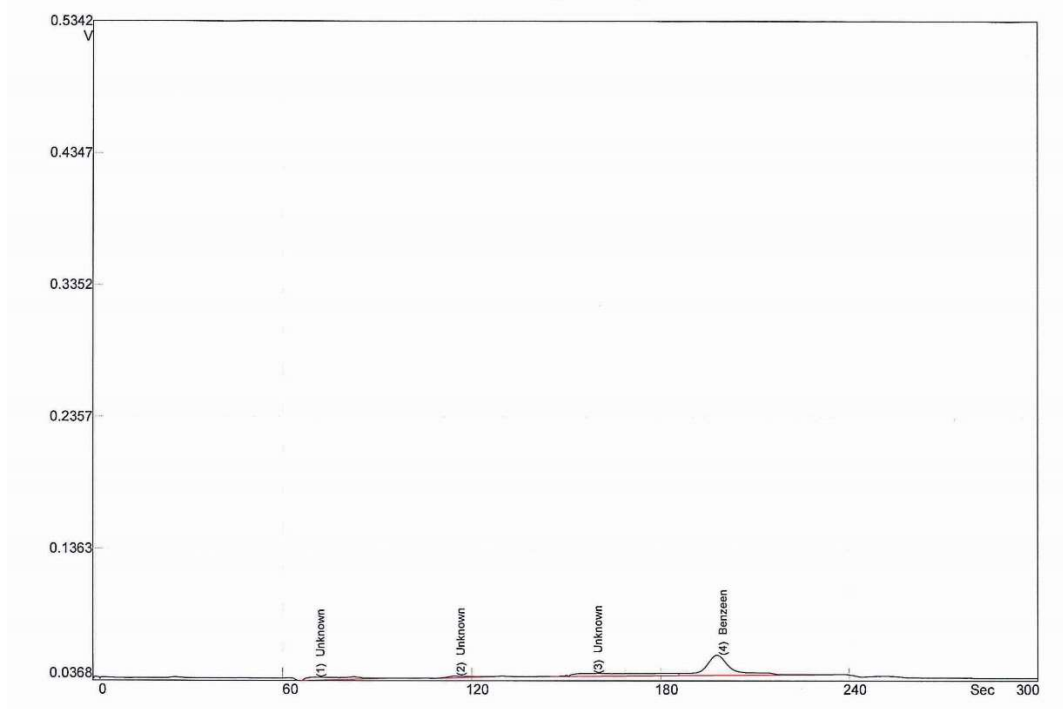
Test 2 with Teflon hose.



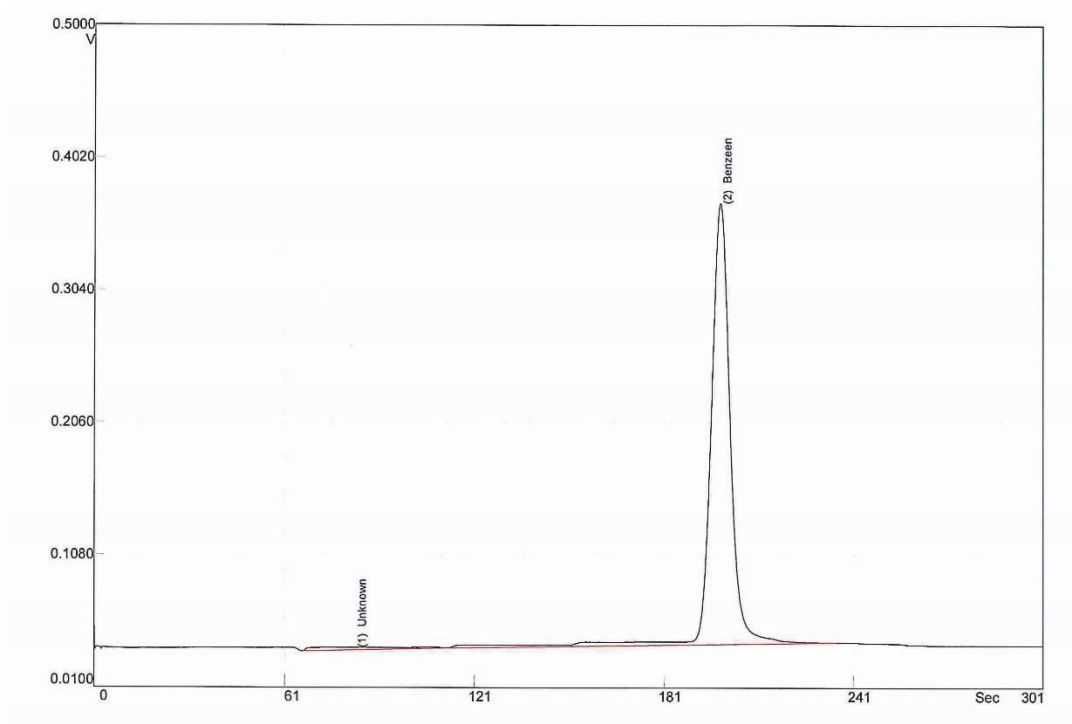


Test benzene adsorption different hose materials.

Test 3 with silicone hose.



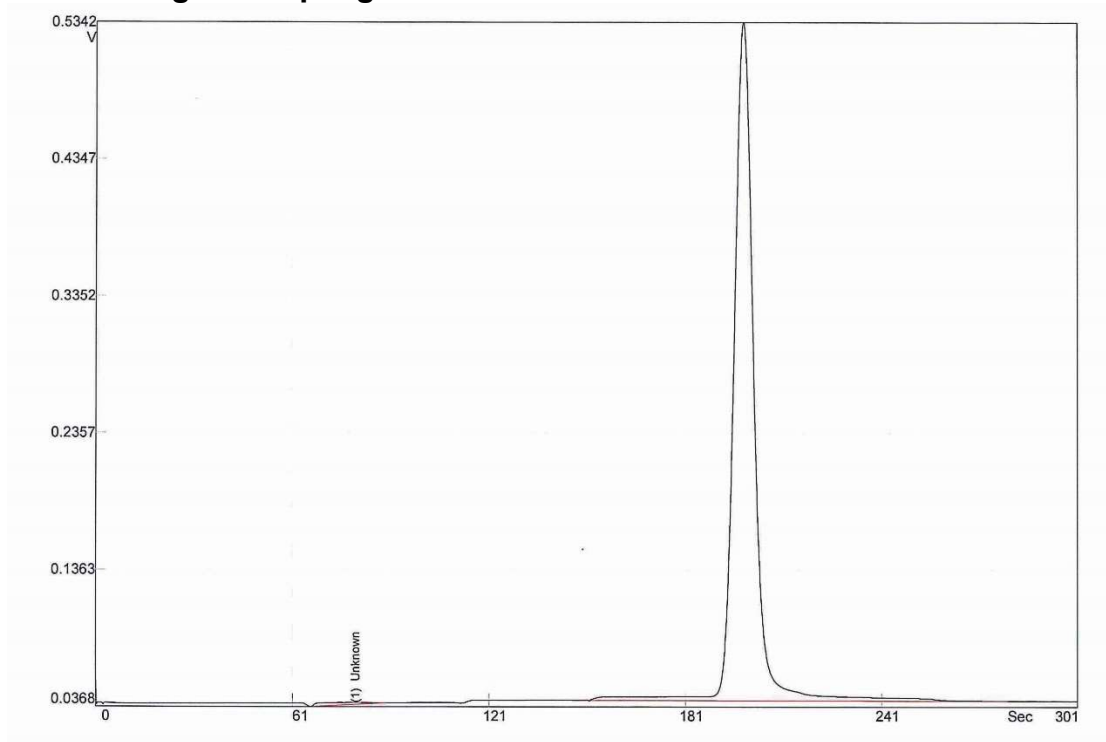
Test 4 with PVC hose.





Test benzene adsorption different hose materials.

Test 5 with gas sampling hose 3x5mm



Test 6 with gas sampling hose 5x8mm

